



āzdan

# Oracle NetSuite for Wholesale Distribution

Inventory Control – Material Handling – Supply Chain Automation



ORACLE  
NETSUITE

PARTNER OF THE YEAR  
→→→→→→→→ 2020 ←←←←←←←←

# Hello! We are Azdan

Award Winning Oracle NetSuite Solution Provider





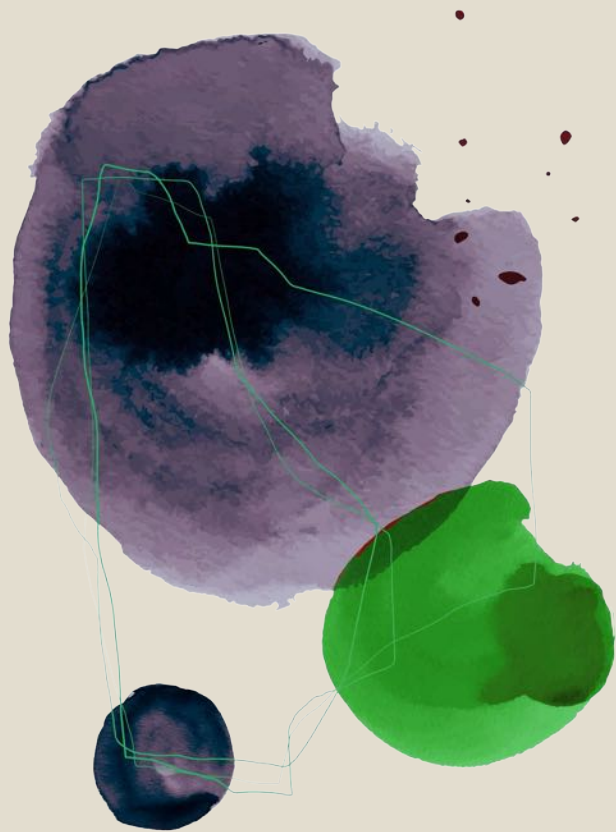
## Turning ERP into Value

Azdan successfully combine innovation with the right team and the right execution (across strategy, consulting and technology) to make a true business-value-led transformation a reality.

Azdan connect all departments including accounting, manufacturing, supply chain management, sales, marketing and human capital management (HCM) inside Oracle NetSuite.

**INTELLIGENT  
ORACLE  
NETSUITE**





**200+**  
Consultants

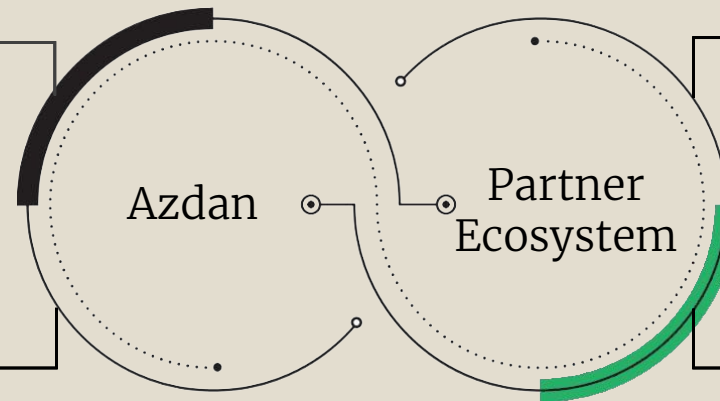
**100%**  
YoY Growth

**15**  
Countries

**10+**  
Partners

Integrated Automated  
End to End Solution

Invest in People  
and development



Deep Industry and  
Solution Experience

Clients become  
digital and efficient

Azdan lead its clients on their digital transformation journeys,  
multiply their capabilities, and help them to become highly efficient.

# AZDAN ORACLE NETSUITE SERVICES

WHEN THE  
ROOTS ARE  
DEEP, THERE IS  
NO REASON  
TO FEAR  
THE WIND.



**BUSINESS ADVISORY** Our team is fairly well-versed in the functional challenges of any solution's implementation. That's why Azdan proposes a business advisory and consultancy before starting any kind of implementation.

**IMPLEMENTATION** Azdan Implementation Method is composed of seven proven linked stages, which support the long-term success of the solution deployment, making it easier to provide you a full control during the project lifecycle.

**OPERATION** After Implementation, you will get the benefit from Azdan fulltime onsite support. Our consultants will accompany your team to make sure that the deployment is running smoothly while eliminating any challenges that may appear in the future.





## FINANCE & ACCOUNTING

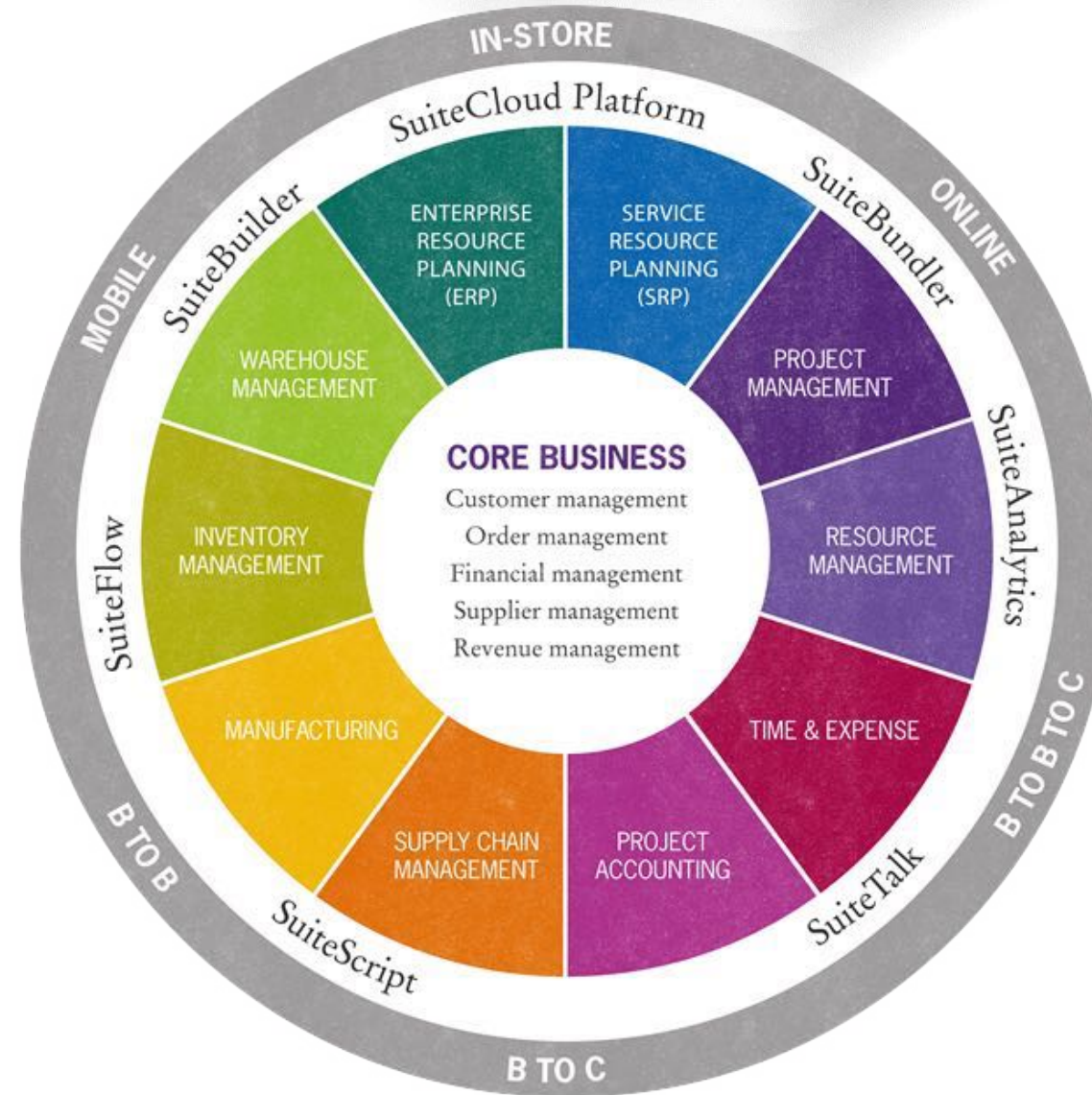
- General Ledger
- Accounts Receivable
- Accounts Payable
- Fixed Assets Management
- Cash Management
- Payment Management
- Multi-Currency & Multi-Company
- Financial Consolidation
- Configurable Tax Engine

## CRM

- Sales Force Automation
- Customer Service Management
- Marketing Automation
- Partner Relationship Management
- Mobile

## HCM

- Core HRIS
- Payroll Automation
- Leave & Attendance
- Employee Self Service
- Recruitment
- Performance Appraisal
- HR Analytics



## PROJECT MGMT

- Project Management
- Project Accounting
- Resource Management
- Time & Expense Management
- Billing

## PROCUREMENT

- Purchase Requisition
- Purchase Contract & Blanket PO
- Request for Quote (RFQ)
- Requisition Approval Workflow

## INVENTORY

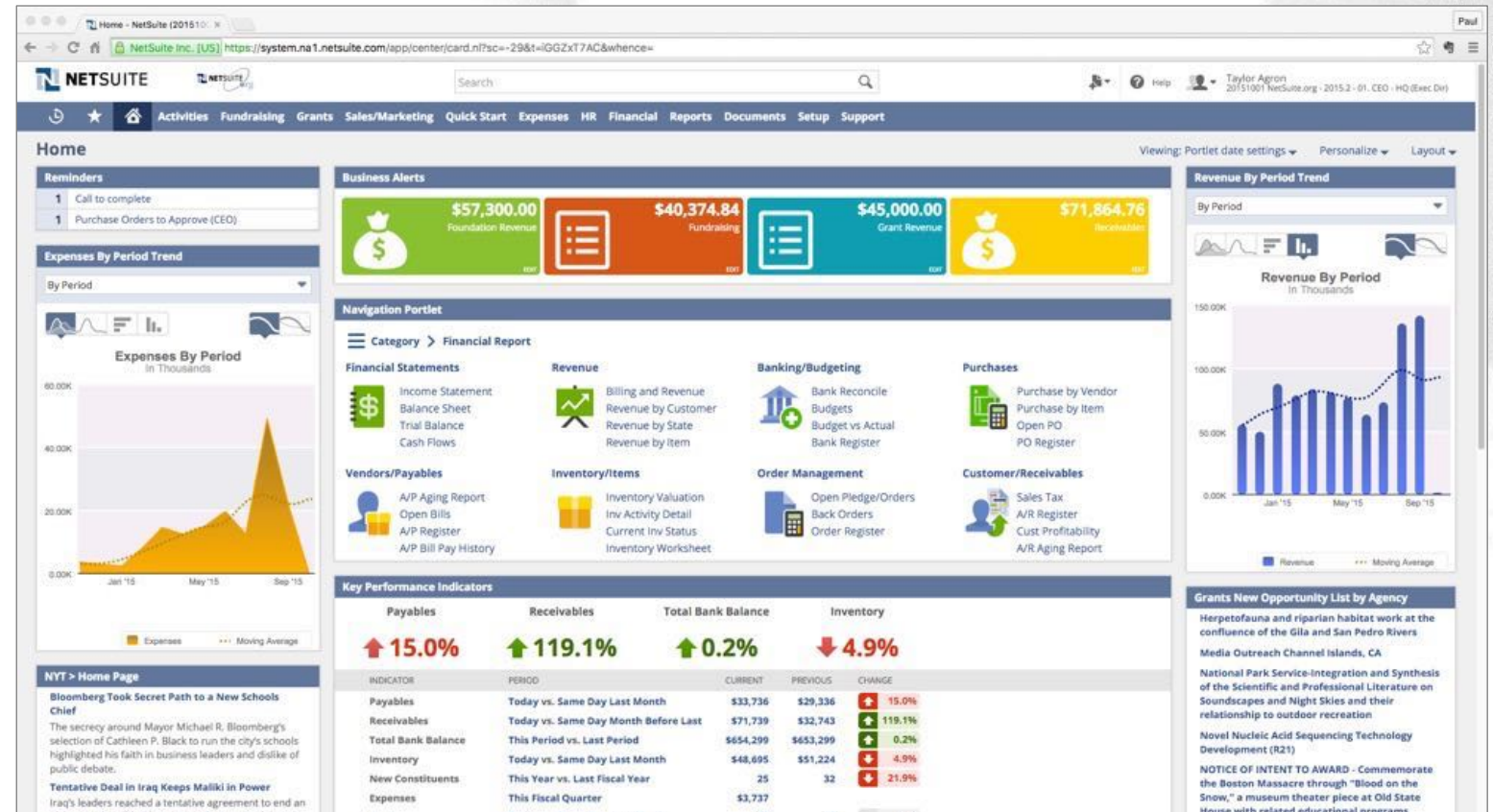
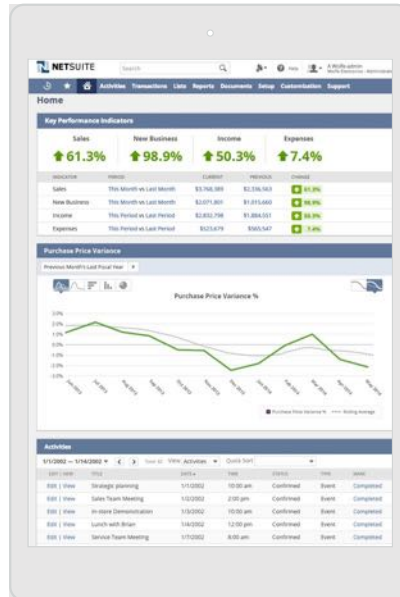
- Inventory Control
- Warehouse Management
- Cost Management
- Order Fulfillment
- Inventory Visibility

## PRODUCTION

- Product Data Management
- Planning and Scheduling
- Work Order Management
- Quality Management
- MES



# Over 300+ BI Components Available “Out Of The Box”





# Azdan Stairway for Wholesale Distributors

**Establish**

- Financials
- CRM and order processing
- Inventory management
- Portals and Self Service

**Elevate**

- Commerce
- Procurement
- Rebate management
- Warehouse
- People and payroll

**Expand**

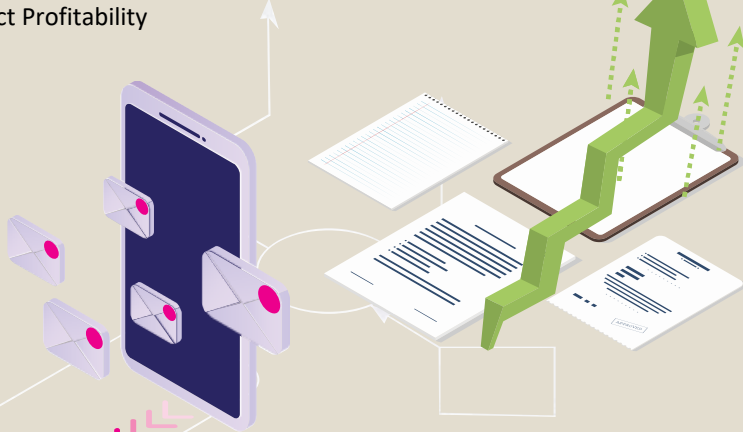
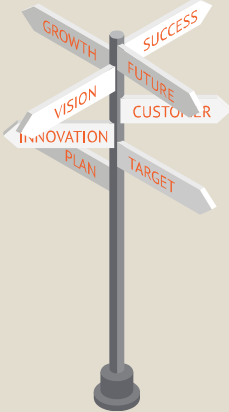
- Quality management
- Financials and operations
- Supply chain execution
- Project and Asset Management

**Accelerate**

- Sales optimization
- International expansion
- Revenue Management
- Project Profitability

**Dominate**

- Business AI
- Internet of Things
- Mobile and ecommerce
- Transportation Management

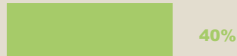


**INCREASED:**

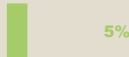
Business Insights



Collection Time for Receivables



Gross Margin



**REDUCED:**

Time to Close the Books



IT Support Costs



# Multi-Location Fulfilment

ORACLE NETSUITE

Search

Activities Shipping Receiving Inventory Reports Analytics Documents Setup Procurement Demand Planning SuiteApps Support

Stock Ledger

ITEM	LOCATION	DESCRIPTION	CLASS	DEPARTMENT	SUBSIDIARY	BEGINNING INV QTY ON HAND	BEGINNING AVERAGE COST	BEGINNING INV ON-HAND VALUE	RECEIPTS	OTHER INV INPUTS	TOTAL INPUT QUANTITY	VALUE OF INPUTS	LAST RECEIPT DATE	SALES
ASUS PG348Q ROG SWIFT 34" Curved 21:9 QHD IPS G-Sync Monitor	US-2	Asus ROG PG348Q 34 Inch Ultra-wide QHD Swift Curved Gaming Monitor	Class-C	- No Department -	Headquarters/United States	24	\$909.00	\$21,816.00	5	0	5	\$4,545.00	12/20/2020	
	US-1	Asus ROG PG348Q 34 Inch Ultra-wide QHD Swift Curved Gaming Monitor	Class-C	- No Department -	Headquarters/United States	27	\$909.00	\$24,543.00	10	0	10	\$9,090.00	12/23/2020	
Total - ASUS PG348Q ROG SWIFT 34" Curved 21:9 QHD IPS G-Sync Monitor						51		\$46,359.00	15	0	15	\$13,635.00		
Brocade 7800 Extension Switch	US-2	16.8 Gbps Fibre Channel ports and six 1 GbE ports enterprise-class extension switch	Class-D	- No Department -	Headquarters/United States	0	\$0.00	\$0.00	5	0	5	\$55,085.00	12/20/2020	
	US-1	16.8 Gbps Fibre Channel ports and six 1 GbE ports enterprise-class extension switch	Class-D	- No Department -	Headquarters/United States	25	\$11,017.00	\$275,425.00	12	0	12	\$132,204.00	12/23/2020	
Total - Brocade 7800 Extension Switch						25		\$275,425.00	17	0	17	\$187,289.00		
Dell 24" U2415 UltraSharp LED Monitor	US-2	DELL UltraSharp U2415 24" IPS LED HD Monitor: 6 ms response time; 2000000:1 dynamic contrast ratio; 300 nits brightness; 1920 x 1200 resolution;	Class-C	- No Department -	Headquarters/United States	23	\$230.00	\$5,290.00	5	0	5	\$1,150.00	12/20/2020	
	US-1	DELL UltraSharp U2415 24" IPS LED HD Monitor: 6 ms response time; 2000000:1 dynamic contrast ratio; 300 nits brightness; 1920 x 1200 resolution;	Class-C	- No Department -	Headquarters/United States	13	\$230.00	\$2,990.00	10	0	10	\$2,300.00	12/23/2020	
Total - Dell 24" U2415 UltraSharp LED Monitor						36		\$8,280.00	15	0	15	\$3,450.00		
Dell UP3216Q 32" UltraSharp UltraHD LED Monitor	US-2	32-inch IPS 4K Ultra High Definition LED Monitor (RL3201PH), 4K2K HD	Class-C	- No Department -	Headquarters/United States	18	\$974.00	\$17,532.00	5	0	5	\$4,870.00	12/20/2020	
	US-1	32-inch IPS 4K Ultra High Definition LED Monitor (RL3201PH), 4K2K HD	Class-C	- No Department -	Headquarters/United States	28	\$974.00	\$27,272.00	10	0	10	\$9,740.00	12/23/2020	
Total - Dell UP3216Q 32" UltraSharp UltraHD LED Monitor						46		\$44,804.00	15	0	15	\$14,610.00		
HP ENVY 32" Media Center Monitor and A440														



# Inventory Traceability

ORACLE NETSUITE

Search

Activities Payments Operations Supply / Demand Lists Reports Analytics Customization Documents Setup Fixed Assets Quality Deduction Management

Supply Chain Snapshot

Edit Back Refresh Actions

Primary Information

ITEM NAME/NUMBER: 3n1 Charging Pad\_ZAG  
REPLENISHMENT METHOD: Material Requirements Planning  
STOCK UNIT: Case 12.  
DATE RUN: 02/08/2021 9:38 am

PAST HORIZON DATE: 12/10/2020  
FUTURE HORIZON DATE: 06/08/2021  
MEMO: Material Requirements Planning & Supply Chain Snapshot

Supply Chain Snapshot -

VIEW: Supply Chain Snapshot LOCATION: Denver

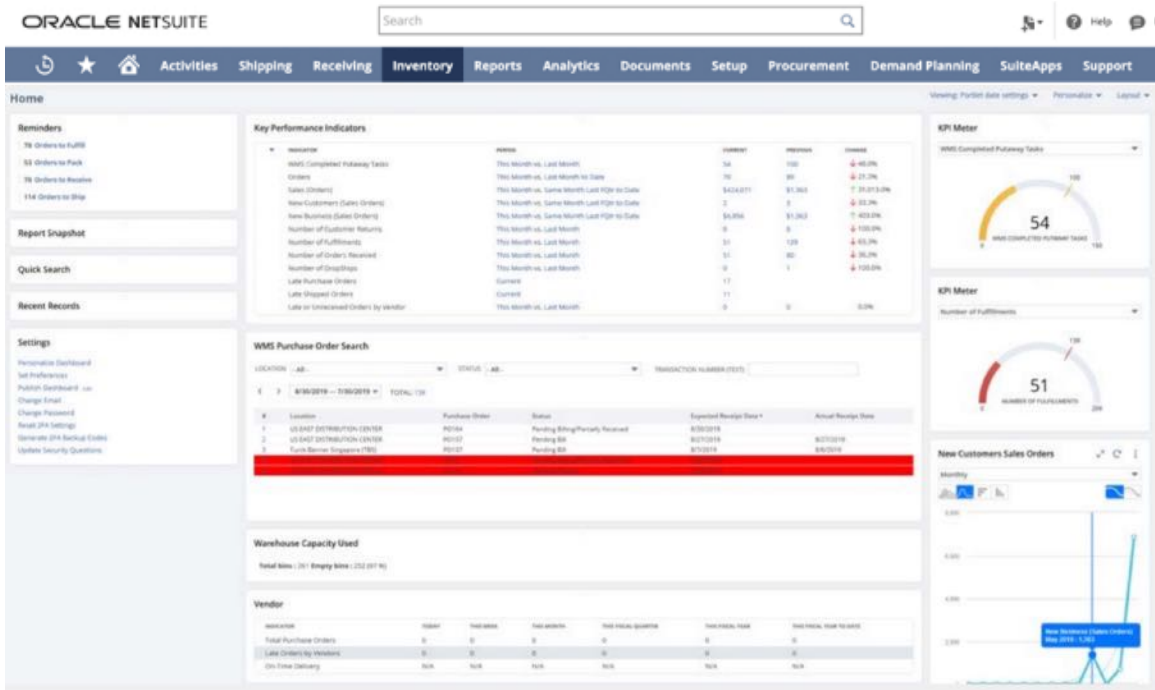
Customize View Manual Simulation

#	ITEM *	DATE	SOURCE	AVAILABLE INVENTORY	SUPPLY QUANTITY	DEMAND QUANTITY	TRANSACTION	WORK ORDER QUANTITY	STATUS	ORIGINAL TRANSACTION DATE
1	3n1 Charging Pad_ZAG	2021-02-08 00:00:00.0	Inventory	50	50		LOC-INV		Inventory/Quantity Available	
2	3n1 Charging Pad_ZAG	2021-02-08 00:00:00.0	Past-Due Transaction	75	25		PO3653		Purchase Order-Pending Billing/Partially Received	2020-12-23 00:00:00.0
3	3n1 Charging Pad_ZAG	2021-02-08 00:00:00.0	Past-Due Transaction	175	100		PO3696		Purchase Order-Pending Receipt	2021-02-07 00:00:00.0
4	3n1 Charging Pad_ZAG	2021-02-08 00:00:00.0	Past-Due Transaction	125		50	SO1644		Sales Order-Pending Fulfillment	2020-12-23 00:00:00.0
5	3n1 Charging Pad_ZAG	2021-02-08 00:00:00.0	Past-Due Transaction	35		90	SO1752		Sales Order-Pending Fulfillment	2020-12-23 00:00:00.0
6	3n1 Charging Pad_ZAG	2021-03-01 00:00:00.0	Transaction	-25		60	SO1755		Sales Order-Pending Fulfillment	2021-03-01 00:00:00.0
7	3n1 Charging Pad_ZAG	2021-03-02 00:00:00.0	Transaction	75	100		PO3697		Purchase Order-Pending Receipt	2021-03-02 00:00:00.0

Edit Back Refresh Actions



# Optimized Pick, Pack and Ship



# Increase labor productivity and reduce handling time



# Client 360 Dashboard

ORACLE NETSUITE

Search

Activities Billing Payroll and HR Financial Reports Analytics Documents Setup SuiteApps Support

Customer Dashboard Altima Technology

Switch to Form view Viewing: Portlet date settings

Customer (default)

Customer Altima Technology

Type Company

Company Name Altima Technology

Status CUSTOMER-Closed Won

Sales Rep Will Clark

Web Address http://www.altimatechnology.com

Default Order

Priority

Email info@AltimaTechnology.com

Phone (805) 485-6750

Altima Technology

1155 E 75th Street, Florence-Graham

Los Angeles, CA 90011

United States Map

Primary Subsidiary United States

Lead Source Trade Show

Balance 33,823.87 Consolidated 33,823.87

Overdue Balance 0.00 Consolidated 0.00

Days Overdue 0 Consolidated 0

Date Created 8/15/2018 3:13 pm

Default Receivables Use System Preference

Account

Deferred Revenue

Account for Revenue

Reclassification

UEN

BRN

Represents

Subsidiary

Billing Schedule

Billing Rate Card

View Edit

Key Performance Indicators

INDICATOR	PERIOD	CURRENT	PREVIOUS	CHANGE
Sales	This Fiscal Year vs. Previous Months Last FHalf	\$33,824	\$0	N/A
Forecast	This Fiscal Year	\$94,745		
Total Pipeline (Projected)	Current	\$0		
Balance	Today vs. Same Day Last Month	\$33,824	\$0	N/A
Unbilled Orders	Today vs. Same Day Last Month	\$26,508	\$0	N/A
Overdue Balance	Current	\$0		
Days Overdue	Current	0		
Average Days to Pay	Previous One Year vs. One Year Before Last	0	0	0.0%
Average Days Overdue	Previous One Year vs. One Year Before Last	0	0	0.0%

Customer Dashboard Links

Sales Reports

Sales by Customer Detail

Sales Orders by Customer Detail

Forecast by Customer Detail

Sales Activity by Customer Detail

Total Pipeline by Customer Detail

Pipeline by Customer Detail

Sales by Item

Detail

Sales by Sales Rep Detail

Open Sales Orders

Transactions

Create Opportunities

Prepare Estimates

Financial Reports

A/R Aging Detail

Unbilled Cost by Customer Detail

Unbilled Time by Customer Detail

Time by Customer Detail

A/R Payment History by Payment

A/R Payment History by Invoice

Activities

Tasks

Phone Calls

Events

Project Tasks

# Sales Orders and invoice automation

ORACLE NETSUITE

Search

Activities Billing Payroll and HR Financial Reports Analytics Documents Setup SuiteApps Support

Sales Order

225 Leadership Enterprises

PENDING APPROVAL

Edit Back Approve Cancel Order Actions

Primary Information

ORDER # 225

DATE 9/8/2017

CUSTOMER Leadership Enterprises

PO # LEAD30489

PROJECT PRJ1018 IT Installation

MEMO Installation Services

SALES REP Will Clark

OPPORTUNITY IT Installation

Summary

SUBTOTAL	21,332.00
DISCOUNT ITEM	
TAX TOTAL	0.00
TOTAL	21,332.00

Items Billing Shipping Accounting Relationships Communication Related Records System Information

DISCOUNT ITEM

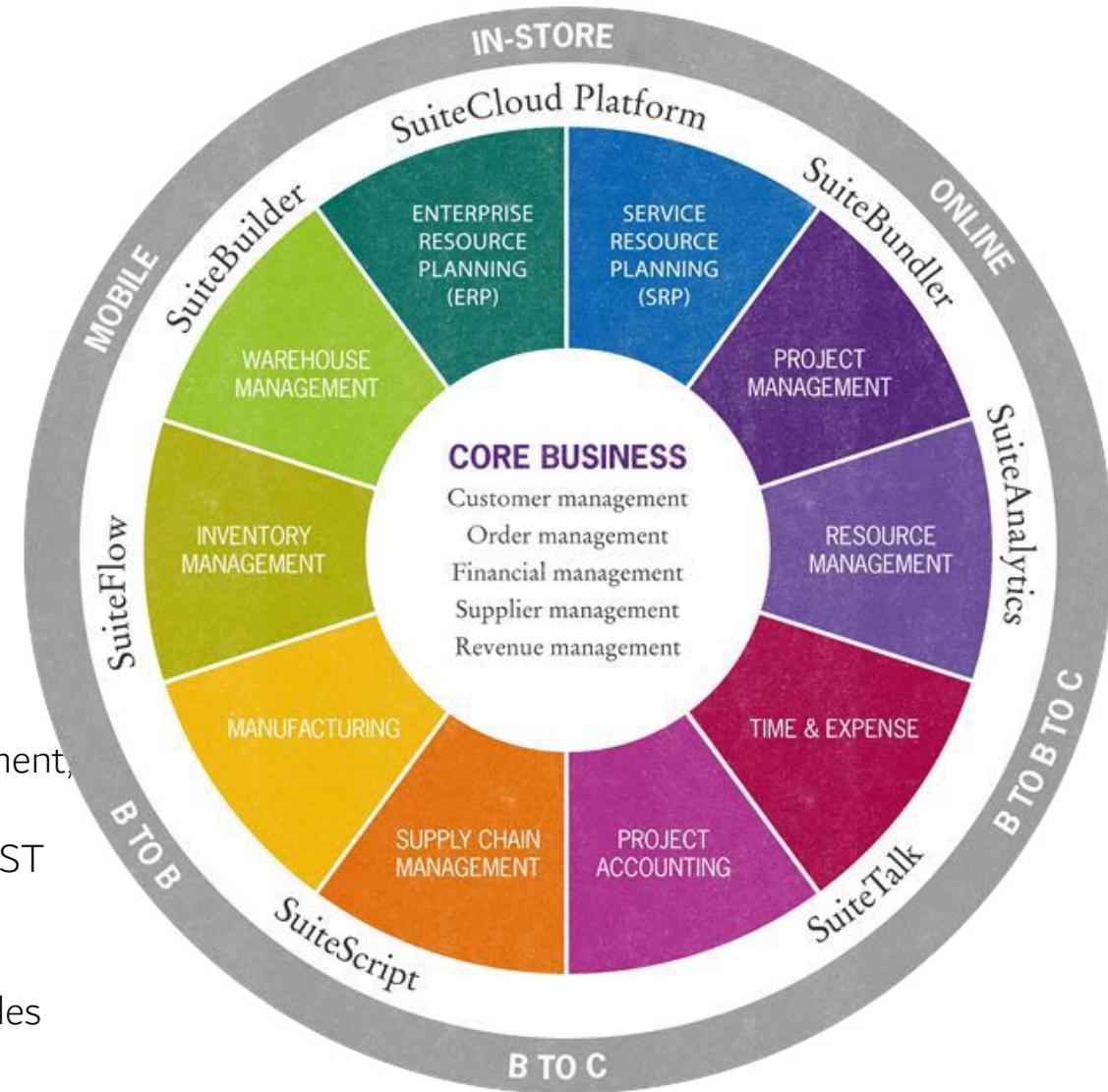
ITEM	FULFILLED	INVOICED	QUANTITY	DESCRIPTION	PRICE LEVEL	RATE	AMOUNT	TAX CODE	TAX RATE	BILL. SCHED.	SERIAL/LOT NUMBERS	CLASS	DEPARTMENT	CREATE PO	PO VENDOR	CURRENCY
NIN_3rd Party Software License	0	0	1	3rd Party Software License	Base Price	1,200.00	1,200.00	-Not Taxable-		Monthly - One Year		Managed Services		Drop Shipment	Emerald Computer Systems Inc.	US Dollar
NIN_7204VXR Router	0	0	1	7204VXR Router	Base Price	4,500.00	4,500.00	-Not Taxable-				Enterprise Products		Drop Shipment	Core4Solutions	US Dollar
NIN_Dell PowerEdge Blade Server	0	0	4	Dell PowerEdge Blade Server	Base Price	1,865.00	7,460.00	-Not Taxable-				Enterprise Products		Drop Shipment	Dell	US Dollar
NIN_VGA gold plated cable - 25ft	0	0	4	VGA gold plated cable - 25ft	Base Price	3.50	14.00	-Not Taxable-				IT Equipment		Drop Shipment	TigerDirect.com	US Dollar
NIN_Dell 24" U2415 UltraSharp LED Monitor	0	0	2	Dell 24" U2415 UltraSharp LED Monitor	Base Price	329.00	658.00	-Not Taxable-				IT Equipment				
SVC_Installation	0	0	1	Installation services	Base Price	5,000.00	5,000.00	-Not Taxable-				Professional Services				





# Oracle NetSuite Platform

- One unified business management suite that covers all ERP, CRM, HCM, Projects, Reporting and BI requirements.
- All customization will be achieved on the same NetSuite database
- Easy upgrade and maintenance.
- Oracle NetSuite is a true cloud application that doesn't separate between SaaS, PaaS and IaaS "One Platform. One View."
- Realtime Consolidation and Reporting.
- No need for complex integration process.
- No need for any middleware.
- Deigned to accommodate unlimited number of subsidiaries & employees.
- Easy to achieve vision for the shared services through centralized Procurement, HR and Finance functions.
- Ability to integrate with any systems using SuiteTalk, SuiteConnect and REST APIs
- Ability to automate any complex workflows using SuiteFlow
- Same mobile application used by communities will be extended to cover sales

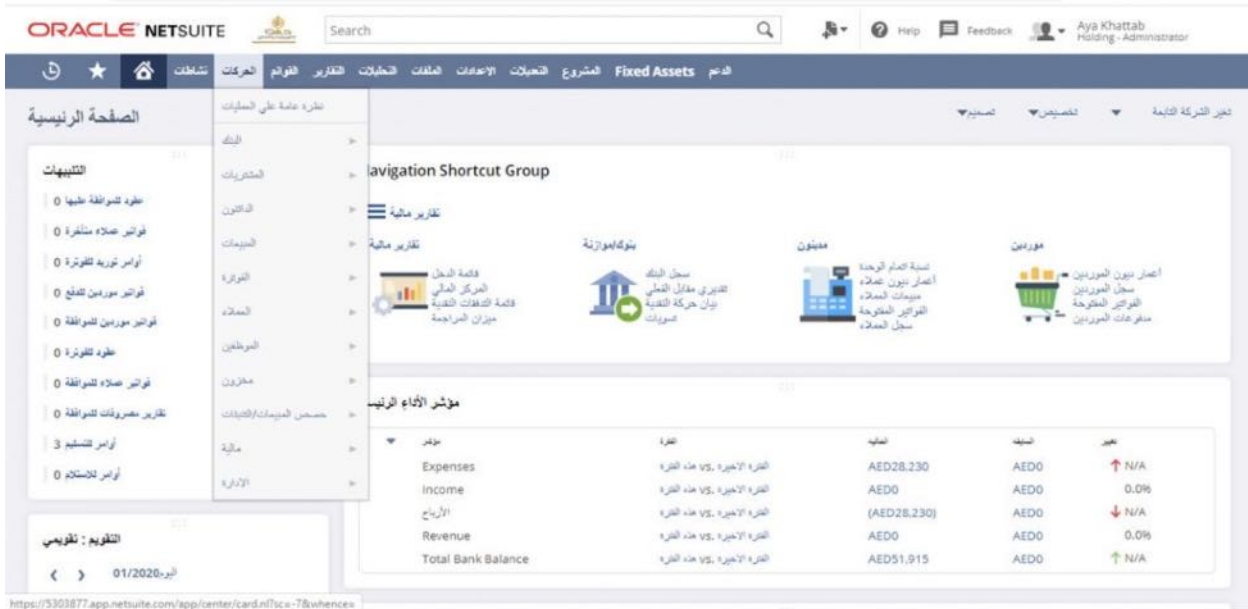


# SuiteCloud – Built in platform

CAPABILITIES						
 <b>Global</b> Language Mgt	 <b>Mobile</b> Tablets, Watch iOS Android	 <b>100% Browser</b> Browser Independent	 <b>Global Search</b> Google the Suite	 <b>Reporting</b> Create Complex forms & reports	 <b>Digital Assets</b> Manage Unstructured Data	 <b>SuiteSocial</b> Collaboration Tools
DEVELOPMENT & DEPLOYMENT						
 <b>SuiteConnect</b> Cloud Data Integration	 <b>SuiteScript</b> Programmable Logic & UI	 <b>SuiteTalk</b> Cloud App Integration	 <b>SuiteAnalytics</b> Built-in Business Intelligence	 <b>SuiteBuilder</b> Point-and-Click Customization	 <b>SuiteFlow</b> Visual Workflow Implementation	 <b>SuiteBundler</b> Cloud Application Distribution
OPERATION						
 <b>Scalability</b> Enterprise Elastic Capacity	 <b>Security</b> SSAE 16 SOC1/ISAE 3402	 <b>Compliance</b> Type II PCI DSS SOX	 <b>Transparency 24x7</b> System Status & Ops	 <b>Assurance</b> 99.5% Uptime Guarantee	 <b>Process Tests</b> Pre- Production Sandbox	 <b>No Version Lock</b> Overnight Upgrades



# Arabic Language Interface



# Arabic Printouts + Localization

فاتورة ضريبية المبسطة  
Simplified Tax Invoice

Invoice Number	100	100	رقم الفاتورة
Invoice Issue Date	25/4/2022	25/4/2022	تاريخ اصدار الفاتورة
			اسم الشركة: العنوان:
VAT Number:			رقم تسجيل ضريبة القيمة المضافة:

Nature of goods or services تفاصيل السلع أو الخدمات	Unit price سعر الوحدة	Quantity الكمية	Item Subtotal (Including VAT) المجموع (شامل ضريبة القيمة المضافة)
Item A - السلعة أ	200.00 SAR	1	230.00 SAR
Item B - السلعة ب	350.00 SAR	2	805.00 SAR
Total Taxable Amount (Excluding VAT) الإجمالي الخاضع للضريبة (غير شامل ضريبة القيمة المضافة) 900.00 SAR			
Total VAT مجموع ضريبة القيمة المضافة 135.00 SAR			
Total Amount Due إجمالي المبلغ المستحق 1,035.00 SAR			



## Azdan HR Solution Overview

### Human Capital Management

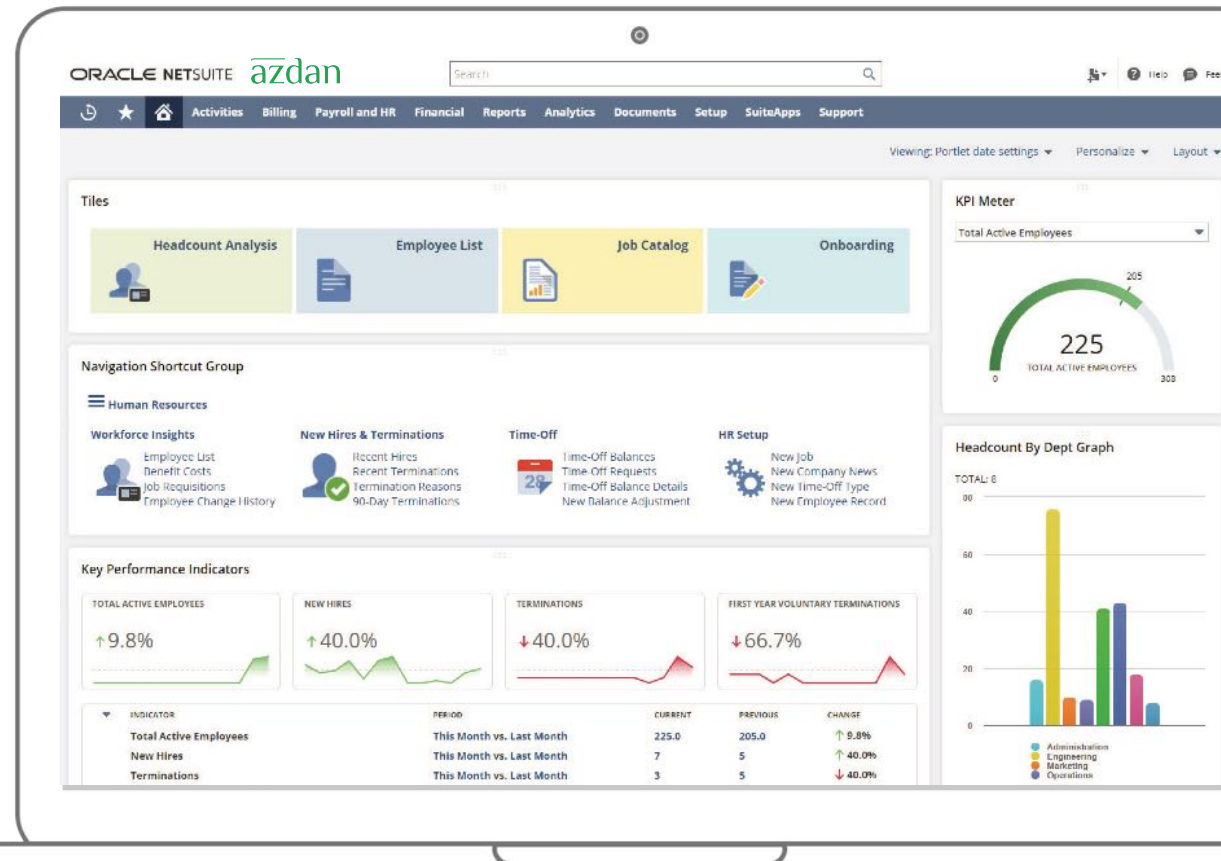
Azdan HCM is a Human Resources SuiteAPP that is built for Oracle NetSuite. It was developed in compliance with the local employment rules and regulations throughout GCC, Levant and North Africa.

### Key Benefits

- Centralized solution to manage global employees
- Provides real-time people analytics
- Connects HR data with financials and procurement
- Payroll Automation
- Employee self-service
- Recruitment
- Performance Appraisal



“ Azdan HCM enables organizations to automate their daily HR processes to help building a better workplace environment and achieving HR goals more effectively.





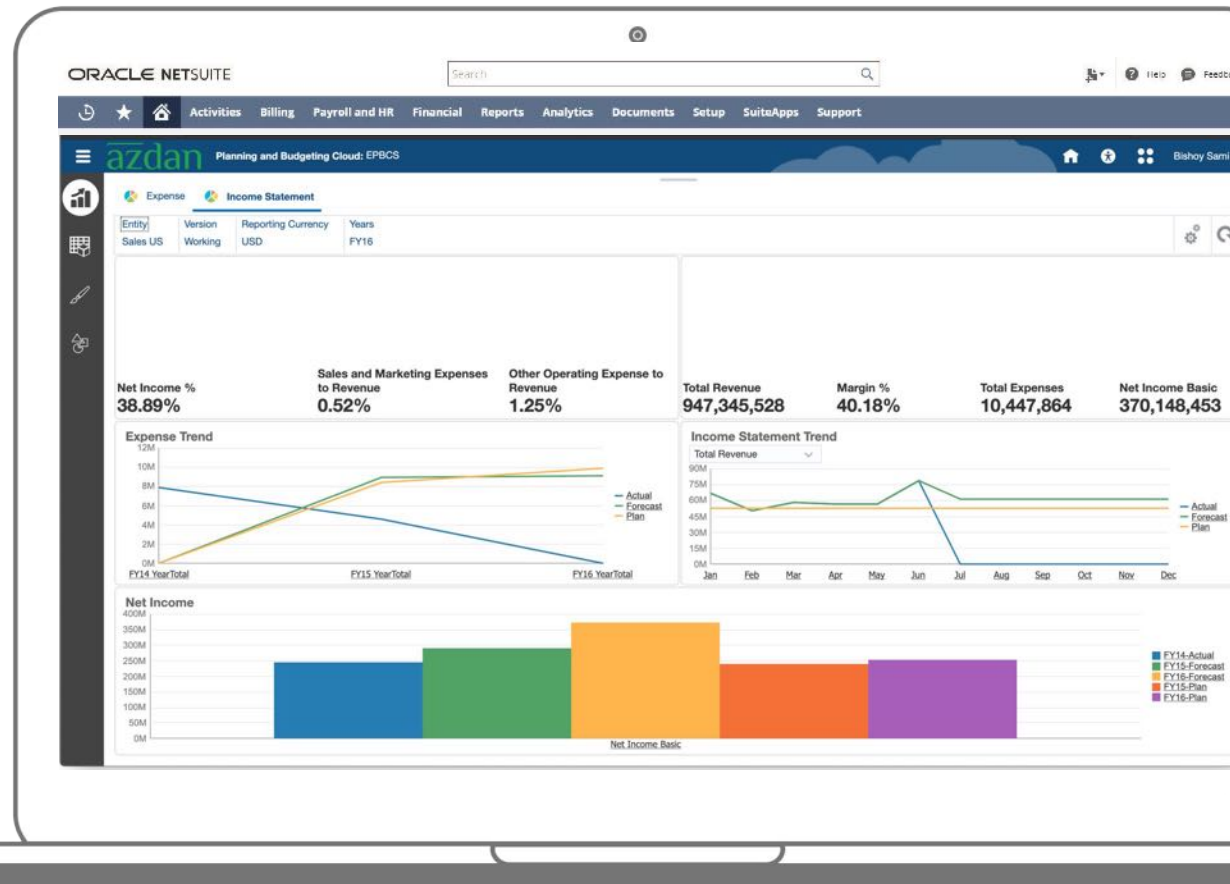
## Oracle NetSuite Planning and Budgeting

### Key Benefits

- Budgeting and Forecasting
- Scenario Planning and Modeling
- Revenue Planning
- Operational Expense
- Workforce Planning
- Trended Financial Statements
- Data Synchronization
- Dashboards
- Microsoft Office Integration



“ Azdan accelerate budgeting and forecasting processes with market-leading predictive features, reporting, scenario planning and modeling capabilities.

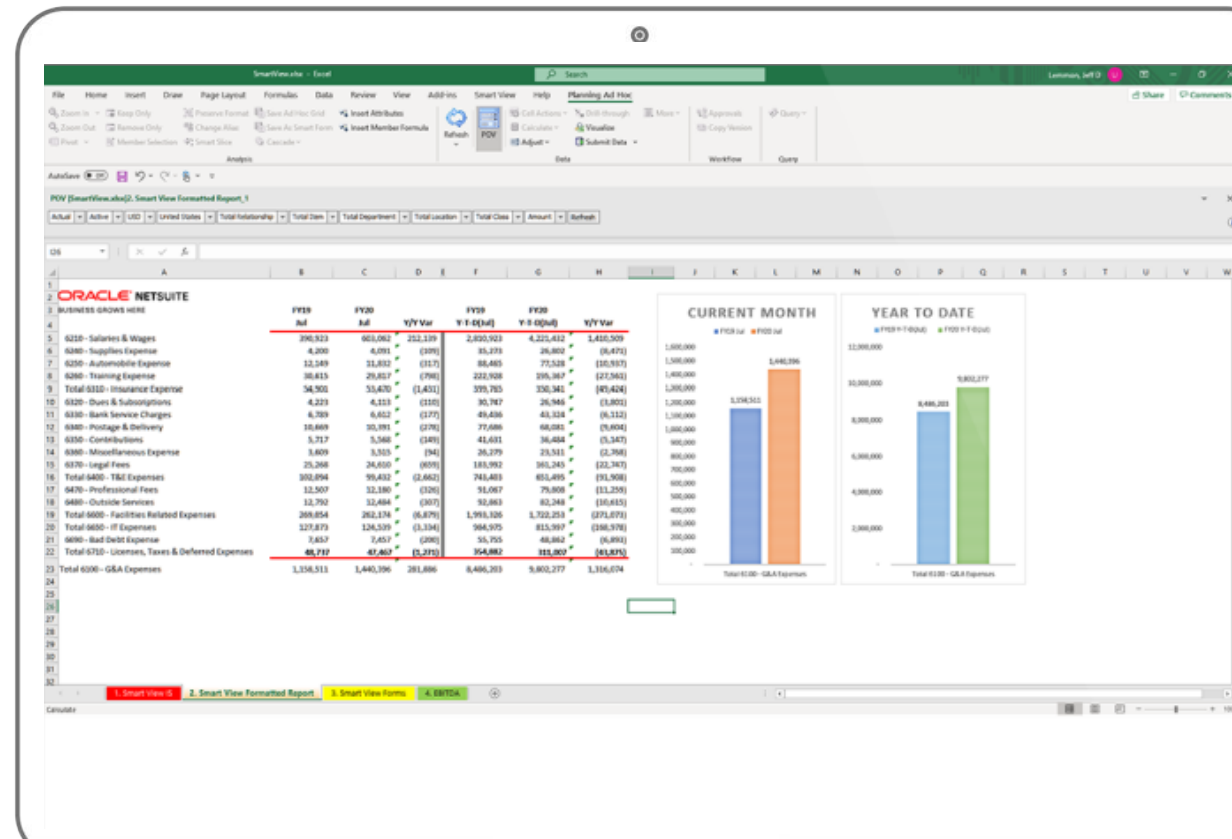


## Oracle NetSuite Planning and Budgeting Smart View

- Full ad hoc and free-form analysis capabilities.
- Create data perspectives called Smart View Worksheets.
- Dynamically refresh NetSuite NSPB data across Office documents with a single click.
- Ability to perform selective, multi-page import of NetSuite NSPB documents.
- Format grids and charts in Excel and PowerPoint linked directly to NetSuite NSPB.
- Report creation in Excel, Word and PowerPoint using NetSuite NSPB.
- Enhanced Smart View reporting flexibility and automation in Excel using VBA macros.



“ Integrate NetSuite data directly into Excel, Word, PowerPoint and Outlook.



āzdan

