



Oracle NetSuite for Manufacturing

Financials – CRM – Supply Chain - Manufacturing

Azdan Stairway for Manufacturing

Establish

- Financials
- CRM and order processing
- Inventory management
- Manufacturing

Elevate

- Warehouse and quality management
- Supply chain
- Work in process
- Payroll and HR

Expand

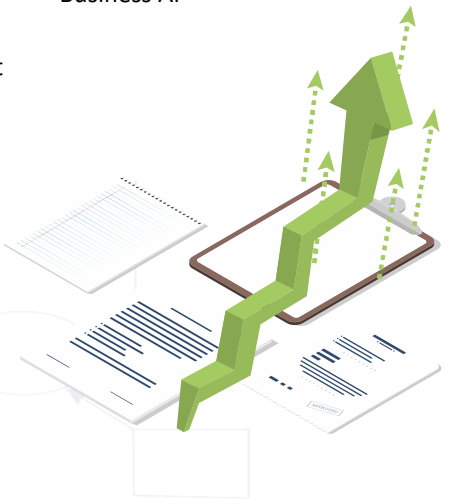
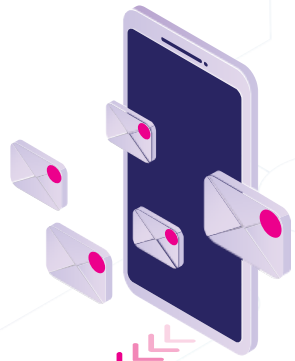
- Business insight and reporting
- Project management
- Planning and budgeting
- Production management

Accelerate

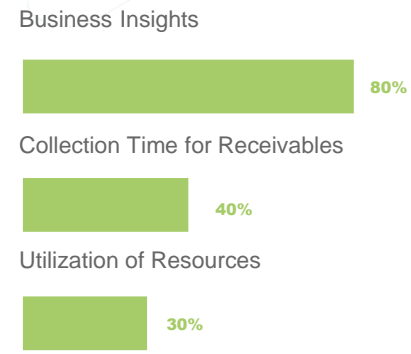
- Sales and order optimization
- Shop floor automation
- Project and revenue management
- Omnichannel commerce

Dominate

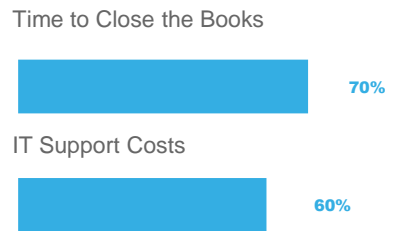
- Field service and repair
- Industrial internet of things
- Global expansion
- Business AI



INCREASED:



REDUCED:



FINANCE & ACCOUNTING

- General Ledger
- Accounts Receivable
- Accounts Payable
- Fixed Assets Management
- Cash Management
- Payment Management
- Multi-Currency & Multi-Company
- Financial Consolidation
- Configurable Tax Engine

CRM

- Sales Force Automation
- Customer Service Management
- Marketing Automation
- Partner Relationship Management
- Mobile

HCM

- Core HRIS
- Payroll Automation
- Leave & Attendance
- Employee Self Service
- Recruitment
- Performance Appraisal
- HR Analytics



PROJECT MGMT

- Project Management
- Project Accounting
- Resource Management
- Time & Expense Management
- Billing

PROCUREMENT

- Purchase Requisition
- Purchase Contract & Blanket PO
- Request for Quote (RFQ)
- Requisition Approval Workflow

INVENTORY

- Inventory Control
- Warehouse Management
- Cost Management
- Order Fulfillment
- Inventory Visibility

PRODUCTION

- Product Data Management
- Planning and Scheduling
- Work Order Management
- Quality Management
- Manufacturing Execution System

Oracle NetSuite Financial Management

The General Ledger (GL) is for all financial transactions. It provides a complete audit trail of all transactions and allows you to create financial statements such as balance sheets and income statements.

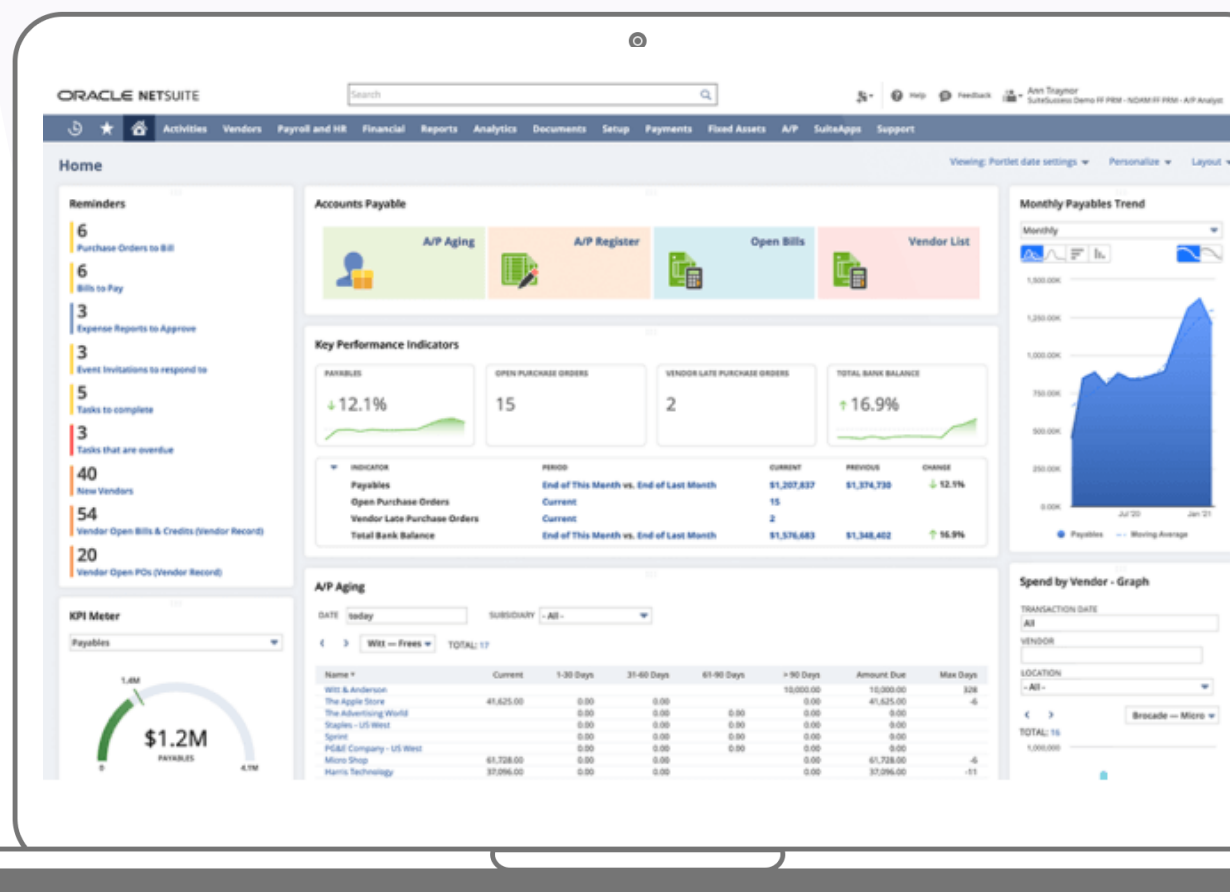
Accounts Payable (AP) is used to manage vendor bills and payments. It allows you to track vendor bills, create purchase orders, and manage payments.

Accounts Receivable (AR) is used to manage customer invoices and payments. It allows you to track customer invoices, create sales orders, and manage payments.

Fixed Assets Management automates the management of fixed assets acquisition, depreciation, revaluation, and retirement, as well as maintenance schedules and insurance.



“ NetSuite Financials is a cloud-based accounting software that provides a suite of financial management applications.



Oracle NetSuite Manufacturing

Shop Floor Control

Issue materials, enter production, record downtime and identify quality issues.

Order Management

Manage all quotes and orders with a centralized system and integrated order-to-cash processes.

Inventory & Supply Chain

Move your inventory to the right place at the right time.

Operations

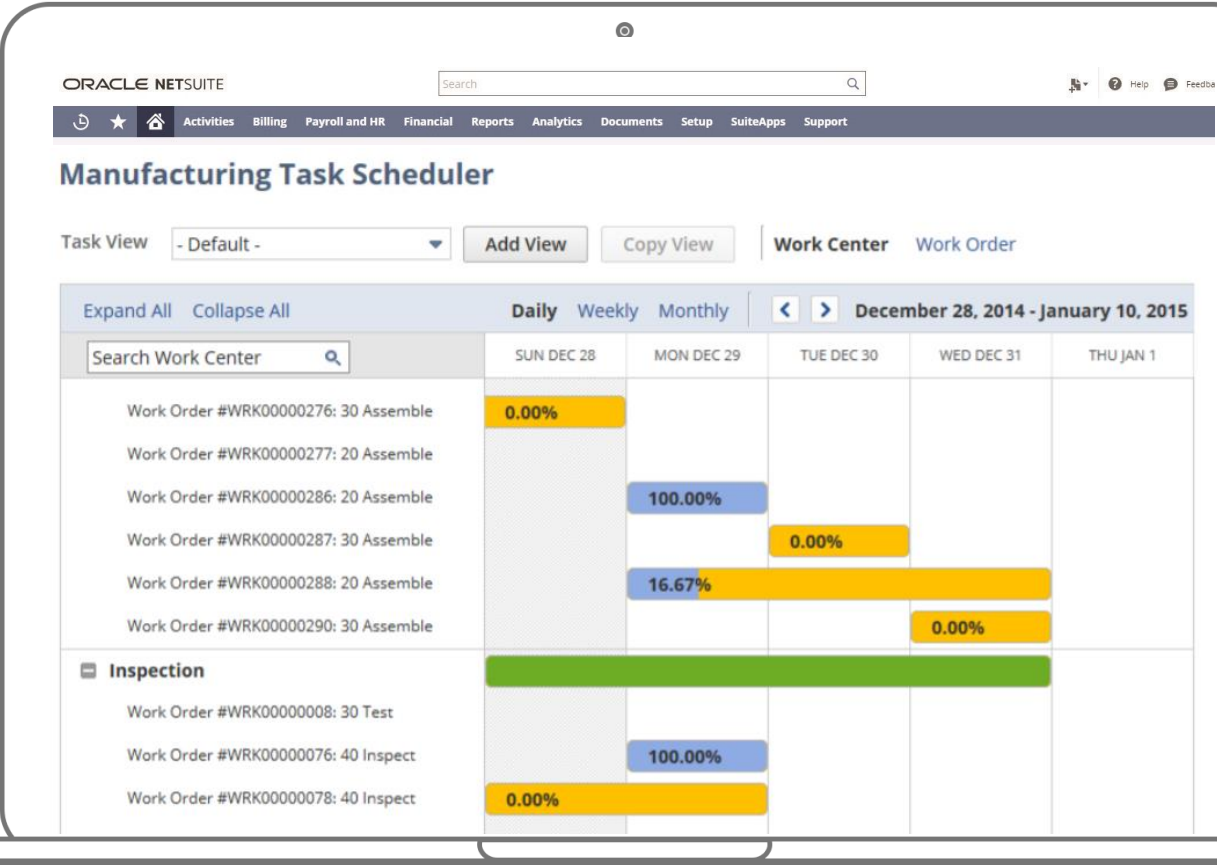
Automating tasks and events and keep track of all activities.

Order Management

Automate fulfillment processes, eliminating the need for duplicative order entries



“ NetSuite lets you create, release, update and monitor work orders throughout the production process.



Fahud Oilfield Services

Azdan Case Study

Business Situation

FOS, the most valued Omani-owned oil and gas solutions provider was facing some challenges to scale their operations after winning a new mega project with PDO. The finance and procurement team was struggling with data silos, separate Excel sheets, and many manual tasks.

Results

- Implementation assistance helps reduce system downtime by a significant 80%, ensuring uninterrupted operations.
- The elimination of manual Excel sheets results in a remarkable 100% reduction in their usage, streamlining processes.
- The adoption of optimized solutions accelerates financial closing and procurement processes by an impressive 50%, saving valuable time.



Location	Oman
Industry	Energy, Manufacturing
Solution	Oracle NetSuite
Employees	51 – 200



Get a Free Demo!

azdan.com

āzdan